



## CoroCAM® 7

### Professional Solar Blind Corona Camera

The CoroCAM® 7's easy to use, yet powerful, features makes detection and location of corona discharges effective and fast. Features are available to increase sensitivity (adjustable Long Integration & Non-Solar Blind Mode), reduce false signals (adjustable Noise reduction & Threshold Level) and improve the visibility of the discharge indicating blob (adjustable Background Priority, Blob Transparency and Blob False Color).

The adjustable viewfinder, rotatable grip and LCD display makes for optimal ergonomics and allows the operator to use the camera in all light conditions from multiple stances, minimizing muscle fatigue.



# NOTABLE FEATURES:

**INPROTEC IRT**

Adjustable and focusable viewfinder

One handed operation

Onboard microphone and speaker

Rotating LCD Display

Instruction sticker

GPS booster antenna port

Laserpointer

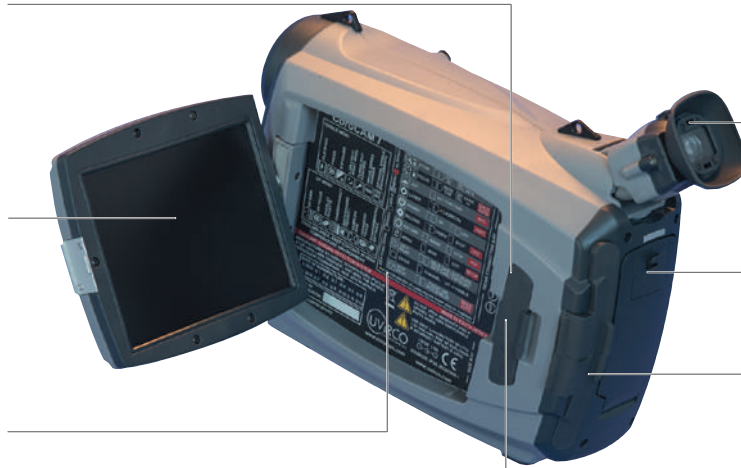
Integrated high power flashlight with adjustable brightness levels

Ventilated viewfinder

Easily replaceable Li-ion batteries

I/O connectors  
Ethernet, USB, SD Card

RS232/485



## NOTABLE FEATURES:

**INPROTEC IRT**

- High sensitivity detector, which can detect UVc emissions down to  $2.05 \times 10^{-18} \text{ W/cm}^2$ , this allows for the detection of the smallest corona discharges.
- Motorized Solar Blind (SB) filter removal in Non-Solar Blind (NSB) mode to increase sensitivity for use at night or indoors.
- Users can select optimised presets for detection or location of discharges.
- Corona signals above the threshold level are displayed in real time.
- High zoom HD visible camera.
- Synchronized UV & Visible Zoom from 1x (defined as  $8^\circ \times 6^\circ / 10^\circ$  Diagonal) up to 4x system zoom (optical for the Visible Channel and digital for the UV channel).
- Onboard still image and video recording in JPG and AVI formats.
- UCF metadata file containing uncompressed displayed image and raw UV image, camera settings and preset values.
- Fast boot up avoids the need for power saving modes.
- User profile setup, save and restore.
- Camera software update via download to SD card.
- 18 Month warranty, extendable to 36 months.

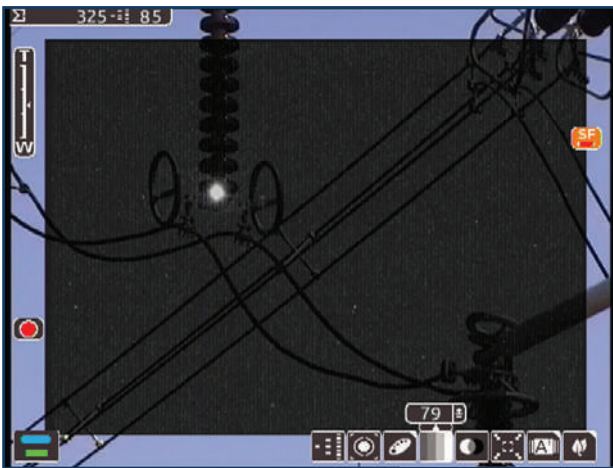


Figure 1 - Background priority view

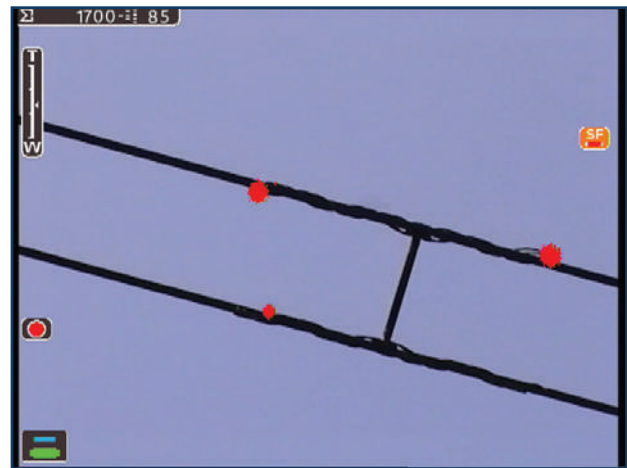


Figure 2 - Discharge on line spacers ends

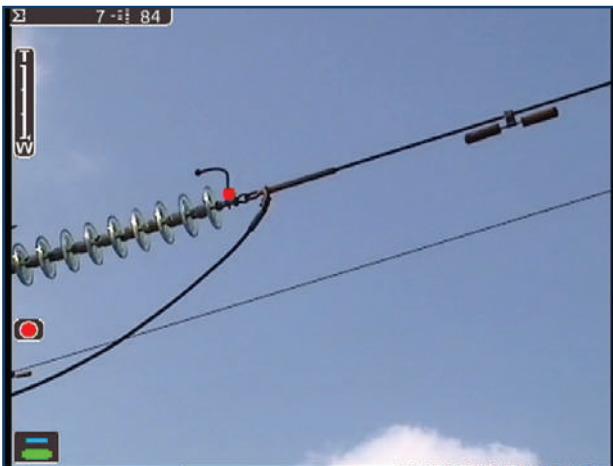


Figure 3 - Maximum Field of view



Figure 4 - Optically Zoomed minimum field of view

## PACKAGE INCLUDES:

CoroCAM 7 handheld camera, Sunshield, 2x batteries (NP-F770), 2 position battery charger (wall and car charger cabling), SD card ( $\geq 64\text{GB}$ ), USB drive with Manual and CoroBASE Image database, Cable Set (Cable mains, composite video cable, USB cable), GPS External Booster Antenna, Document Set all neatly packed in a Hard carry case.



# SYSTEM SPECIFICATIONS:

**INPROTEC IRT**

ULTRAVIOLET CHANNEL	
Typical Sensitivity:	SB (240 - 280 nm) $2.05 \times 10^{-18}$ Watt/cm <sup>2</sup> , 3pC @ 20m (Korea Electrotechnology Research Institute   IEC 60270:2000)   13.16dB $\mu$ V(RIV) @ 1MHZ @ 10m (Korea Electrotechnology Research Institute – NEMA107-1987)
	NSB (240-300 nm) $\sim 1 \times 10^{-18}$ Watt/cm <sup>2</sup> , 0.8pC @ 15 m Tested & certified by Innogy SE-Eurotest Germany: IEC 60270:2000
Field of view:	8° Horizontal x 6° Vertical $\sim$ 10° Diagonal   Zoom Range (optical): 1x   Zoom Range (digital): 8° to 2°, in 3 steps
Focus type:	Linked to Visible with manual override
Focus Range:	<0.7m to Infinity
Detector Life Span:	No degradation
Corona Measure Method:	Intensity based count, Calibrated for irradiance value of selected area
Threshold Mask:	Useful range 20-100%
UV Transparency:	0-100%
UV False Color Selection:	6 pre-set colors, 100 user selectable hues
UV Integration:	Adjustable period, Summation or Noise Reduction

VISIBLE CHANNEL	
Resolution:	1945 x 1097 pixels
Sensitivity Day Mode:	0.1 lx (F1.6, 50% IRE, ICR off)
Sensitivity Night Mode:	0.05 lx (F1.6, 50% IRE, ICR on)
Exposure / Image Enhancements:	Auto or Manual
Focus Type:	Automatic with manual override
Focus Range:	1m to Infinity (w/o extra accessory lens)
Useful Zoom Range (optical):	16° (0.5x) to 2° (2x)
Camera Module Zoom Range:	30x Optical zoom, 55.9° to 2,1°
Zoom type:	Stepped and Smooth
Zoom Range (digital):	4x, 6x, 8x, 12x
Maximum IFOV / $\Delta$ K:	0.0192mRAD / 52.1629

IO & OS	
OS Features:	Icon based menu system, 10x User Profiles
	Boot to inspection capable in 6s, to record capable in 60s.
	Image Sort Numbering, Video list and playback
Input:	Keypad (right hand), Onboard & External Microphone
Output:	Composite Video, Onboard speaker
Bi-Directional:	USB, RS-232
Firmware:	Internal GPS, with external hotplug booster antenna
	LED Flashlight (Adjustable brightness, 10-100% usable range)
Software Update:	Via files downloaded from website to SD card

ACCESSORIES	
Carrying:	Neckstrap
	Camera Harness



Website: [www.uvirco.com](http://www.uvirco.com)  
 Address: UVIRCO Technologies (Pty) Ltd, Unit B003, The Woods, 41 De Havilland Crescent, Perseus Technopark, Pretoria 0020, South Africa  
 Tel: +27 (0)12 349 3760 | Fax: +27 (0)86 435 5204 | Email: [info@uvirco.com](mailto:info@uvirco.com)

MEDIA & DATA STORAGE	
Storage Medium:	SD card (64 GB supplied with camera)
Storage Capacity:	1000+ images or >1 hr video/GB
Storage Format Video:	AVI (Standard Definition) (H.264 compression)
Storage Format Still:	JPG (Standard Definition 768 x 578 pixels)
Media Download:	Via Card Reader or USB

POWER	
Battery:	Sony Li-ion, Type L compatible
Battery Location:	Internal, quickly replaceable
Operating Time:	> 3hrs maximum, 2.5hrs typical
Continuous Operation:	No overheating
Charging:	In camera or in external charger
External Power Supply:	9-16V 12VA - Car or mains adapter   Mains Adaptor: 110-240 V ac 50 - 60 Hz / 12 V dc 3A   Protection: Reverse polarity, over current, under voltage

PHYSICAL SPECIFICATION	
Ergonomics:	Rotatable grip w/ one handed keypad
Weight:	2.2 Kg including battery
Dimensions:	275 mm L x 135 mm W x 190 mm H
Window aperture:	$\varnothing = 62$ mm
Operating Temp:	-15 °C to 55 °C
Storage Temp:	-20 °C to 60 °C
Humidity:	Up to 90 %, non condensating
Mounting Point	Standard 1/4" X20 thread tripod mount

DISPLAY	
Type:	5.7" LCD, 640 x 480 pixels, color, manual or auto brightness up to 450cd/m <sup>2</sup> , variable angle
	Viewfinder, 800x600, Focusable, Adjustable Angle, Ventilated rubber eye piece
Display Modes:	UV+Vis, VIS only, UV only, UV Priority
UV Overlay Accuracy:	<1 millirad deviation
On Screen Display:	Gain, zoom, count, active functions

PROTECTION	
Storage / Transport Case:	Pelican style plastic hard case
Environmental Protection:	IP55
Safety Standard:	CE, IEC61010-1
Warranty:	18 months

Per maggiori informazioni contattare:

**INPROTEC IRT**

Via Bizet, 44  
 20092 Cinisello Balsamo (MI)