

B SERIES

Compact and easy-to-use thermal camera for daily operation



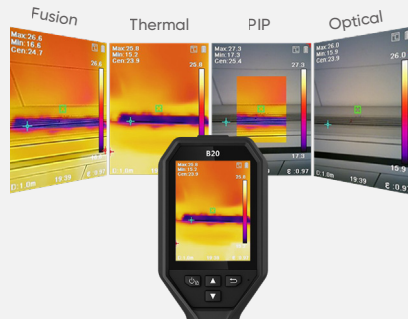
Enhanced Thermal Clarity with SuperIR

Powered by HIKMICRO SuperIR image enhancement technology, it upscales the resolution of captured thermal images to 320 x 240 (76,800 Pixels).



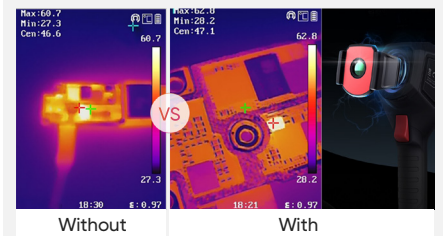
Multiple Image Modes

Fusion, Thermal, PIP and Visual modes to suit your preferred view. (B11, B20 only)



Innovative Macro Mode

Using a clip-on macro lens, the B series cameras can see details as small as 500 microns and allow you to take accurate temperature readings on small objects, such as components on printed circuit boards or assemblies.



3.2" Color LCD

View the details of your images on the large, class-leading LCD screen.



Efficient Temperature Measurement

Track the temperature of Center, Hot, Cold spot and 3 Custom spots automatically.

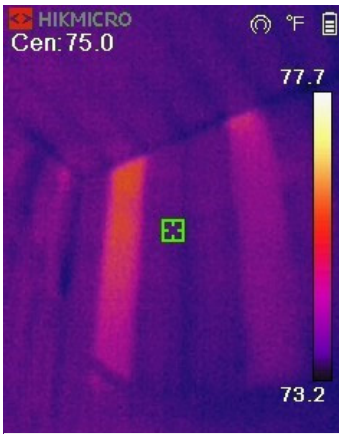


Wi-Fi Connectivity

Connect to mobile devices via built-in Wi-Fi and the HIKMICRO Viewer App to quickly share your images.

APPLICATIONS

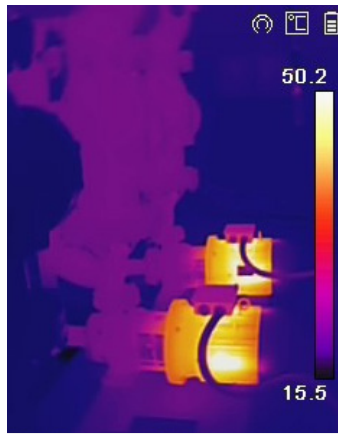
INPROTEC IRT



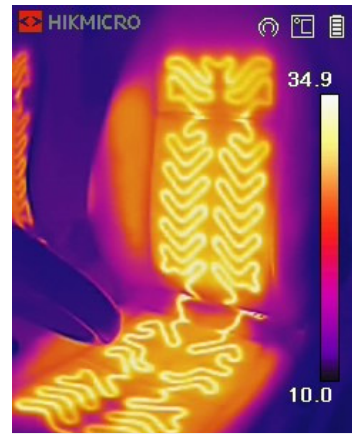
Building Envelope



Electrical Cabinet



Mechanical Inspection



Automotive Inspection

WHAT'S IN THE BOX



- Thermal Imager
- Wrist Strap
- International Charger x 5 (US, UK, EU, AU, CN),
- USB Cable
- Power Adapter
- Quick Start Guide
- Calibration Certificate

OPTIONAL ACCESSORIES



– B Series Macro Lens –
HM-B201-MACRO



– E/B Series POUCH –
HM-B01-POUCH

Camera Highlights		B11	B21L	B20
Infrared Image	IR Resolution	192 × 144 (27,648 pixels)	256 × 192 (49,152 pixels)	
	SuperIR	Yes, on Captured Thermal Images		
	NETD	<0.04°C / NETD< 40mK		
	Image Frequency	25 Hz		
	Field of View (FOV)	27.8° × 37.2°	37.2° × 50.0°	37.2° × 50.0°
	Focus Mode	Focus Free		
Image Display	Visual Camera	1600 × 1200 (2 MP)	x	1600 × 1200 (2 MP)
	Image Modes	Thermal/Visual/PIP/Fusion	Thermal	Thermal/Visual/PIP/Fusion
	Display	240 × 320 Resolution, 3.2" LCD Screen		
Measurement and Analysis	Object Temperature Range	-20 °C to 550 °C (-4°F to 1022°F)		
	Accuracy	Max (±2°C/3.6°F, ±2%), for the ambient temp. 15°C to 35 °C (59 °F to 95 °F) and object temp. above 0 °C (32°F)		
Data Storage and Communication	Storage Media	Built-in 16 GB flash memory		
	File Format	Radiometric JPEG		
	Storage Capacity	Approx. 90,000 Images		
General	Wi-Fi	802.11 b/g/n (2.4 GHz)		
	Battery Operating Time	Approx. 6 hours		
	Led Flashlight	✓	x	✓
	Laser Pointer	x	✓	x

Per maggiori informazioni contattare:

INPROTEC IRT

Via Bizet, 44 - 20092 Cinisello Balsamo (MI) Tel. 02-66.59.59.77 e-mail: infrared@inprotec-irt.it web: www.inprotec-irt.it

