

M SERIES

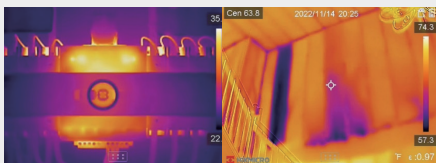
Advanced thermal imaging camera with full function analysis



SuperIR

Multiple Product Options

M series products provide wide-angle and manual focus options. The manual focus with a larger focal length option (without "W") is ideal for electrical, HVAC, and mechanical inspection where focusing on specific components is critical. The "W" series features a fixed focus wide FOV making them ideal for scanning walls, floors, and large-scale items.

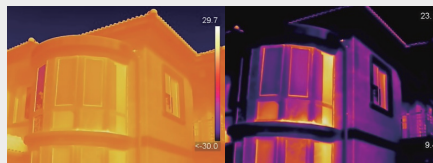


Without "W"

With "W"

1-Tap Level & Span

Quickly highlights the area of the image you are interested in by narrowing the span with one tap on the **3.5" LCD touchscreen**, instantly improving image contrast and highlighting potential problems.



Auto Level & Span

Manual / 1-Tap Level & Span

Interchangeable Battery System

Includes **2 interchangeable Li-ion batteries** and a dual bay charger to provide you with **up to 12 hours** of operation. You can stay powered up for even the longest inspections.



2 interchangeable Li-ion batteries



On-camera Analysis

Offers 17 measurement rules, 7 color alarm palettes and 4 image modes for powerful on-camera analysis.



Camera Interface

Intuitive 3.5" LCD Touch Screen or interactive buttons to easily navigate to any function. Use either or both!



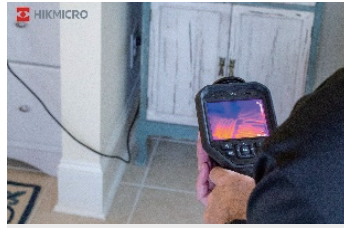
Multiple Image Annotations

Support voice, text, and QR Code Scan annotations, helping to improve inspection efficiency and productivity.

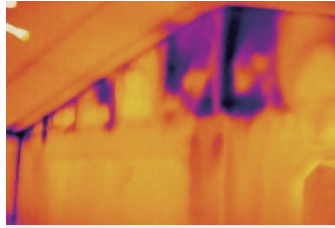
APPLICATIONS



Check Electrical



Check Underfloor Heating



Check Building Insulation



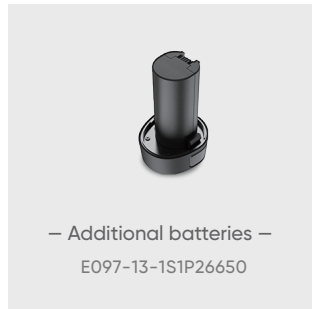
Check Mechanical Status

WHAT'S IN THE BOX



- Thermal Imager with Wrist Strap
- Interchangeable and Rechargeable Li-ion Batteries (x2)
- Power Supply for Battery Charger
- Two-bay Battery Charger
- International Use Plugs (US/EU/UK/AU) for Power Supply (x4)
- USB 2.0 A to USB Type-C Cable
- Hard Carrying Case
- Calibration Certificate / Quick Start Guide
- 16GB Micro SD card(M10/M20/M20W) / 64GB Micro SD card(M30)

OPTIONAL ACCESSORIES



– Additional batteries –
E097-13-1S1P26650



– Pouch –
HM-SP01-POUCH



– Replacement Charger –
HM-5202CC

Model No	M11	M11W	M20W	M20	M30	M60
IR Resolution	192 x 144 (27,648 pixels)	192 x 144 (27,648 pixels)	256 x 192 (49,152 pixels)	256 x 192 (49,152 pixels)	384 x 288 (110,592 pixels)	640 x 480 (307,200 pixels)
SuperIR	192 x 144 (27,648 pixels)	192 x 144 (27,648 pixels)	512 x 384 (196,608 pixels)	512 x 384 (196,608 pixels)	768 x 576 (442,368 pixels)	1280 x 960 (1,228,800 pixels)
NETD	< 40 mK (@ 25 °C, F#=1.0)			< 35 mK (@ 25 °C, F#=1.0)		
Focal Length	6.9mm	3.6mm	3.5mm	6.9mm	10mm	15mm
FOV	18.8° x 14.1°	37.2° x 27.8°	50° x 37.2°	25° x 18.8°	37.5° x 28.5°	41.9° x 33.3°
Focus	Manual Focus	Focus Free	Focus Free	Manual Focus	Manual Focus	Manual Focus
Visual Camera	3264 x 2448 (8 MP)					
Min. Focusing Distance	0.1 m (0.33 ft)	0.5 m (1.64 ft)	0.5 m (1.64 ft)	0.1 m (0.33 ft)	0.2 m (0.33 ft)	0.3 m (0.98 ft)
Object Temp. Range	-20 °C to 550 °C (-4 °F to 1022 °F)					-20 °C to 650 °C (-4 °F to 1202 °F)
Accuracy	Max. (± 2°C/3.6°F, ± 2%), for ambient temperature 15°C to 35°C (59°F to 95°F) and object temperature above 0°C (32°F)					
Wi-Fi	802.11 b/g/n (2.4 GHz and 5 GHz)					
Storage	Default Storage: Removable SD Card (16 GB) ; Max. Storage Capacity: 128 GB			Default Storage: Removable SD Card (64 GB) ; Max. Storage Capacity: 128 GB		
Battery Operating Time	Approx. 6 hours x 2	Approx. 6 hours x 2	Approx. 6 hours x 2	Approx. 6 hours x 2	Approx. 4 hours x 2	Approx. 4 hours x 2

Per maggiori informazioni contattare: **INPROTEC IRT**

INPROTEC IRT S.r.l.

Via Bizet, 44 - 20092 Cinisello Balsamo (MI) Tel. 02-66.59.59.77

e-mail: infrared@inprotec-irt.it web: www.inprotec-irt.it

